



VICTORIA

JEWELLER & WATCHMAKER

ABN: 33 014 960 527

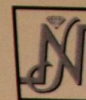


415 Albany Highway, Victoria Park, W.A. 6100

Tel: (08) 9361 2844 Fax: (08) 9470 2219

Web: www.victoriajeweller.com.au

e-mail: valuations@victoriajeweller.com.au



Member of J.G.B.S.

Fellow of the
Gemmological Association
of Australia

CERTIFICATE OF VALUATION

For the following purpose ONLY FOR RETAIL INSURANCE REPLACEMENT VALUE

This appraisal is the property of

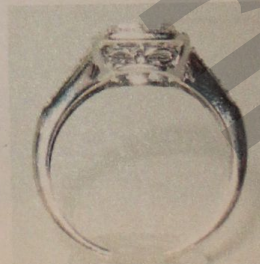
CERTIFICATE
NUMBER

004T113811

MDRH2620

PAGE:

ITEM NO.	DESCRIPTION	VALUE
	<p><u>ONE 18CT WHITE GOLD AND DIAMONDS CLUSTER ENGAGEMENT RING</u></p> <p>This cast made 18CT white gold cluster style engagement ring has a square platform over a Fleur DE Lis gallery, 9.9 x 9.8mm containing twelve diamonds, four princess cut invisible set in the centre, estimated at 0.05ct each and eight baguette cut, channel set, the centre stones within a four claw corner setting, estimated at 0.02ct each, colour G/H, clarity SI2. Surrounded by twenty small round brilliant cut diamonds, grain set, estimated at 0.01ct each, colour G/H, clarity SI. There are twenty small round brilliant cut diamonds, grain set along the split shoulders (ten each side), estimated at 0.01ct each, colour G/H, clarity SI.</p> <p>The flat tapered shank is 1.6mm wide at the base and stamped 750 MHJ. Ring size O 1/2.</p> <p>The total weight of this ring is 3.91 grams.</p> <p>TOTAL VALUATION (Four thousand two hundred dollars) RWCSZ6</p>	<p>\$ 4,200.00</p>



Gold AUD\$1,503.37 per oz - AUD\$1.00 = US\$0.79

ASSESSOR

30th day of April 2013

Dated this:

TOTAL \$ \$ 4,200.00

TERMS AND CONDITIONS - SEE REVER