



Est. 1985

Valuation Centre of Australia

The grade, weight and dimensions of gemstones not removed from settings are approximate.

Diamond clarity grades are based on 10 x magnification by an experienced observer. Colour grading is by comparison to "Master" coloured diamonds.

Discrepancies in diamond grading may occur when diamonds are set due to the colour of the precious metal and restrictions of the setting. The precious metal purity is that marked on the article. When testing of the precious metal is considered necessary the results are approximate.

All conclusions are substantiated by careful examination of the items within limitations imposed by their setting using appropriate gemological and scientific testing methods. The values and descriptions stated are opinions.

The valuer cannot accept responsibility for any transaction or third party relying on this document.

Whilst every care has been taken in the preparation of this valuation, no liability is accepted for any statement or opinion or for any error or omission.

When photographs of items are supplied, the original may not be true to size. Colours may vary due to limitations of the photographic reproduction.

Replacement values may not necessarily represent the price one might pay in a retail showroom after negotiations between a buyer and seller.

The values stated do not represent the value one would expect if the items were sold on the second hand market or internet.

This valuation is for the sole use of the above name and shall not be reproduced except in its entirety.

Stock Number: 157392

Commissioned by:



Campbelltown

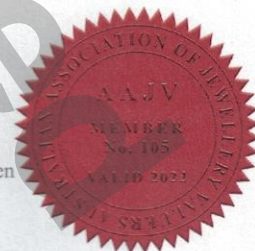
A diamond pendant featuring one central brilliant cut diamond claw set in a four claw white gold setting, surrounded by ten brilliant cut diamonds claw set and seven baguette cut diamonds channel set. White gold cluster design, stamped and valued as 14ct. Attached to a 40cm belcher link chain. White gold, fastened by a bolt ring clasp. Stamped and valued as 18ct.

Diamond Cut: Brilliant
Dimensions: 5.90 x 5.95 x 3.50mm
Weight: Approximately 0.75ct
Colour/Clarity: G-H/SI1
Make: Medium
Culet: Nil
Girdle: Thick
Depth: 59.3%
Diamond Cut: Brilliant
Dimensions: 2.5 x 2.5mm
Weight: Approximately 0.50ct in total
Colour/Clarity: G-H/SI
Diamond Cut: Tapered Baguette
Dimensions: 3.0 x 1.0 to 1.5mm
Weight: Approximately 0.35ct in total
Colour/Clarity: G-H/SI
Make: Medium
Pendant Weight: 3.9 gram
Chain Weight: 1.5 gram
Value: \$13,550



Value in Words: Thirteen Thousand, Five Hundred and Fifty dollars

Unless otherwise stated, all coloured stones listed on this valuation have probably been subject to a stable and possibly undetectable colour and or clarity enhancement process. Prevailing market values are based on such universally accepted processes. This document represents a subjective opinion of the current retail replacement value of the items and may be used for insurance replacement purposes. Replacement values are based on a similar "new item" from a traditional bricks and mortar jewellery outlet in the major metropolitan areas. Valuations may be affected by fluctuations in the exchange rate, therefore, the valuer assumes no responsibility for the unforeseen changes in the market conditions.



MEMBERSHIPS



Signed: *K. Campbell* K. Campbell FGAA

Gemmologist & Registered Valuer No. AAJV.105....

Ref No: 425936

Forex USD/AUD

0.71

Gold US/Oz

1909

Platinum US/Oz

N/A

Date:

28th February 2022

Valuation Centre of Australia Pty Ltd, ABN 79 053 138 971

PO Box 1486 Chatswood NSW 2057 Ph 02 9419 7908 Email: info@valuationcentre.com.au Website: www.valuationcentre.com.au