



VICTORIA JEWELLER & WATCHMAKER

ABN 89 626 762 856 Tel: (08) 9361 2844
415 Albany Highway, Victoria Park, W.A. 6100



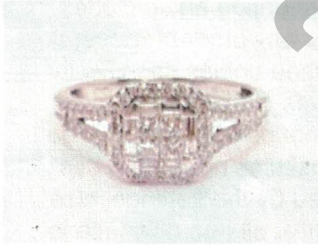
Web: www.victoriajeweller.com.au Email: info@victoriajeweller.com.au

CERTIFICATE OF VALUATION

Cash Converters – Armadale

Reference: **2633-381753 - 1**

Date: 29 January 2025



Description DIAMOND RING

Stamped 750, MHJ. 18ct White gold.

Four princess cut diamonds are invisible set in the centre. Baguette cut diamonds are channel set in pairs forming a border and are surrounded by a halo of claw set round brilliant cut diamonds which is displayed upon the scroll style gallery. Claw set round brilliant cut diamonds are set upon each split and flared shoulder. Exact replacement may be difficult.

Measurements

4 x Diamonds – Princess Brilliant cut, 2.3-2.4mm total estimated weight 0.32cts

Colour H-I, Clarity P1

8 x Diamonds – Baguette cut, 2-2.3x1.3mm total estimated weight 0.20cts

Colour G-H, Clarity SI

40 x Diamonds – Round Brilliant cut, 1.2-1.3mm total estimated weight 0.28cts

Colour H-I, Clarity P1-P3



Total diamond weight: 0.80cts

Manufacture: Mass production cast

Band: Flat

Shank: 1.7<3.1mm

Ring Size: Q

Total Weight: 4.12 grams

Valuation based on **retail replacement at Perth, traditional bricks and mortar retail outlet.**

This valuation has been prepared for the sole purpose of retail replacement at a traditional bricks and mortar retail store. The value in this valuation may not be indicative of the usual market or sale price of this item. The valuation is subject to the terms and conditions supplied on the take-in form at the time of requesting this valuation, see reverse side.

FOUR THOUSAND & TWENTY-FIVE DOLLARS

\$4,025.00

Represents the value for such articles for the purposes stated.

Exchange Rate: A.63
(AUD\$/Ounce)

Gold: \$4392

Plat: \$1546

TEENA SHEPPARD FGAA

Dip GEM, NCJV Registered Valuer Reg W0084

Gemmologist

Member NCJV WA Division

Member GAA WA Division

T Sheppard



Gemstones have not been removed from the settings for accurate assessment, all grades and weights are approximate. Valuation is based on the current value at the time of valuation and includes Australian Government Taxes where applicable.

This valuation is not suitable for any purpose other than the purpose(s) stated above and should not be relied on by an entity besides the addressee unless specifically noted.



VICTORIA JEWELLER & WATCHMAKER

ABN 89 626 762 856 Tel: (08) 9361 2844

415 Albany Highway, Victoria Park, W.A. 6100

Web: www.victoriajeweller.com.au Email: info@victoriajeweller.com.au



CERTIFICATE OF VALUATION

Cash Converters – Armadale

Reference: **2633-381753 – 2/3**

Date: 29 January 2025



Description

PAIR OF FITTED DIAMOND RINGS

Surface acid tested approximately 18ct. 18ct White gold.

The round brilliant cut diamonds are pave set upon the fitted band. Exact replacement may be difficult.



Measurements

34 x Diamonds – Round Brilliant cut, 1.1-1.2mm total estimated weight 0.20cts
Colour H-I, Clarity P2-P3

Total diamond weight: 0.10cts

Manufacture: Mass production cast

Band: Flat

Shank: 1.3<1.7mm

Ring Size: Q

Total Weight: 4.88 grams both

Valuation based on **retail replacement at Perth, traditional bricks and mortar retail outlet.**

This valuation has been prepared for the sole purpose of retail replacement at a traditional bricks and mortar retail store. The value in this valuation may not be indicative of the usual market or sale price of this item. The valuation is subject to the terms and conditions supplied on the take-in form at the time of requesting this valuation, see reverse side.

TWO THOUSAND NINE HUNDRED & FIFTY DOLLARS

\$2,950.00

Represents the value for such articles for the purposes stated.

Exchange Rate: A.63
(AUD\$/Ounce)

Gold: \$4392

Plat: \$1546

TEENA SHEPPARD FGAA

Dip GEM, NCJV Registered Valuer Reg W0084

Gemmologist

Member NCJV WA Division

Member GAA WA Division

T Sheppard



Gemstones have not been removed from the settings for accurate assessment, all grades and weights are approximate. Valuation is based on the current value at the time of valuation and includes Australian Government Taxes where applicable.

This valuation is not suitable for any purpose other than the purpose(s) stated above and should not be relied on by an entity besides the addressee unless specifically noted.