



PERTH CITY JEWELLERY VALUATIONS

PO Box 3431,
Mandurah East WA 6210
teena.sheppard@theaje.com.au
0428 943 243
ABN: 68 643 874 22

CERTIFICATE OF VALUATION

Cash Converters- Bunbury

Reference: 0168-273006
Date: 6th May 2025



Description

DIAMOND RING

Stamped 750, AC16. 18ct Yellow gold.

Three diamonds are rhodium plate four claw cherner set in a centre diagonal row and the channel set tapered baguette cut and baguette cut diamonds are displayed upon each flared and curved shoulder. The exact replacement may be difficult.

Measurement

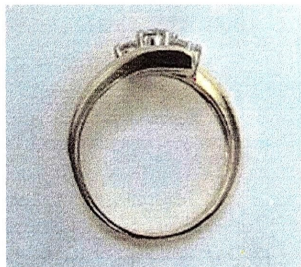
3 x Diamonds – Round Brilliant cut, 3.3-3.4mm total estimated weight 0.48ct

Colour Top light brown, Clarity SI-P1

10 x Diamonds – Baguette cut, 1.7-2mm total estimated weight 0.20ct

18 x Diamonds – Tapered Baguette cut, 1.7-2mm total estimated weight 0.32ct

Colour G-I, Clarity SI-P1



Total diamond weight: 1.00cts

Band: Flat

Ring Size: Q

Manufacture: Mass production cast

Shank: 2.1<2.9mm

Total Weight: 5.55 grams

Valuation based on retail replacement at Perth, traditional bricks and mortar retail outlet.

This valuation has been prepared for the sole purpose of retail replacement at a traditional bricks and mortar retail store. It does not represent the second-hand resale value of the item. The second-hand resale value may vary significantly depending on market conditions, demand, and negotiations. It is the sole responsibility of the owner to determine and agree upon a second-hand resale price with a willing buyer. No guarantees are made or implied regarding the amount the item may sell for on the open market.

FOUR THOUSAND NINE HUNDRED & TWENTY-FIVE DOLLARS

\$4,925.00

Represents the value for such articles for the purposes stated.

Exchange Rate: 0.64
(AU\$/Ounce)

Gold: \$5211

Plat: \$1545

TEENA SHEPPARD FGAA

Dip GEM, NCJV Registered Valuer Reg W0084

Gemmologist,

Member NCJV WA Division

Member GAA WA Division

T Sheppard



Gemstones have not been removed from the settings for accurate assessment, all grades and weights are approximate. Valuation is based on the current value at the time of valuation and includes Australian Government Taxes where applicable. This valuation is not suitable for any purpose other than the purpose(s) stated above and should not be relied on by an entity besides the addressee unless specifically noted. The valuation is subject to the terms and conditions supplied on the take-in form at the time of requesting this valuation, see reverse side.