



Australian Gem Testing Laboratory

AUSTRALIAN DIAMOND & JEWELLERY VALUATION CENTRE

Suite 1205 A, 227 Collins Street, Melbourne, Victoria 3000, Australia.
ABN 52 634 019 237 valuations@mbloodgroup.com Telephone (613) 9650 7221

MC 035900202679

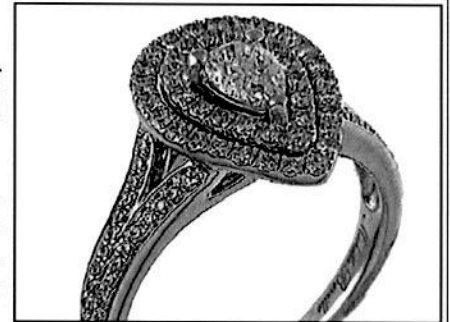
Date: 27 June 2021
Valuation No: MMBCC12007
Customer No: 12034
Page: 1 of 1

Valuation for Traditional Retail Insurance Replacement

Item 1

One, hand-assembled, 18ct white gold, multistone, gem set ring. Plain, narrow, tapered band of 1.75mm in width (at base) x 1.05mm depth, with a curved and split underrail, hollow top and shoulders, and open back settings.

Feature central three claw setting, housing one pear-shape diamond, claw set. Surrounded by two outer rows, housing a total of forty-two round brilliant cut diamonds, tapered in size, claw set. Underneath the setting is seven round brilliant cut diamonds, claw set in a curve style to one side, and six round brilliant cut diamonds, claw set in a pointed design. All secured between the extended and split shoulders of the plain and polished band.



Polished finish - stamped '18K 1.00CT Michelle Beville (in script) 1440' - acid tested as 18 carat gold. Finger size is M 1/2.

The ring contains:

One claw set pear-shaped diamond, clarity 'Si1', colour 'F'.
Dimensions = 5.94mm(L) x 4.05mm(W) x 2.65mm(D-estimated) x 3%(Girdle Thickness)
Total Weight = 0.39ct (known weight - see NOTE below)

Ninety Nine claw set round brilliant cut diamonds, clarity 'Si & P1' (mixed), colour 'G to H' (mixed).
Dimensions = 1.00mm(Dia) x 0.61mm(D-estimated) x 2%(Girdle Thickness) (smallest)
Dimensions = 1.40mm(Dia) x 0.85mm(D-estimated) x 2%(Girdle Thickness) (largest)
Total Weight = 0.61ct (estimated - see NOTE below)

Total Item Weight = 5.20 grams - Total Gemstone Weight = 1.00ct - Total Metal Weight = 5.00 grams (estimated)

NOTE: The centre diamond has been certified by and is the opinion of Messrs. International Gemological Institute, Certificate no. 332801440 Dated September 6, 2018. The centre diamond has also been laser inscribed upon the girdle with IGI (logo) and 332801440. Due to setting constraints, the exact dimensions of the remaining diamonds cannot be ascertained. Therefore, weights of the remaining diamonds are very much estimated. For accurate testing, weights, colour, and clarity gradings, the remaining diamonds require removal from the settings. The below replacement figure is based upon crafting a similar ring employing similar materials and techniques being for a retail insurance purpose only. This figure does not represent the previous selling price of the item and will not be indicative of the resale value of the item.

Insurance Replacement Valuation \$4,350.00

The total of the one item included in this valuation is Four Thousand Three Hundred and Fifty dollars.

Total Value = \$4,350.00

These items were valued for Cash Converters
by Margaret M Blood F.G.A.A., Dip. D.T., N.C.J.V., R.V. 345

Exchange Rates: US\$ 0.7593 Yen 63.0000 Metal Prices (US\$/ounce) : Gold 1782.50 Silver 26.20 Platinum 1113.00

The article(s) described above have been examined and the values given are an expression of our opinion on the date stated. Gemstones have not been removed from the settings for accurate assessment and all grades, weights, and dimensions are approximate, unless otherwise stated. Whilst all care has been taken in making this valuation, no liability is accepted other than to the person to whom the certificate is given for any errors or omissions, including any liability to the person by reason of negligence. This valuation is NOT transferable to any third person or party. Values expressed in Australian dollars (including GST) and are

