



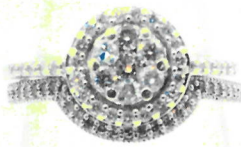
Victoria Jeweller & Watchmaker

415 Albany Highway Victoria Park WA 6100 ABN: 8966762856 PH: 08 93612844
Web: www.victoriajeweller.com.au Email: info@victoriajeweller.com.au

Roseville Enterprises, Joondalup
Ref: 3456-327979

Date: 3 February 2022

CERTIFICATE OF VALUATION



Description: A set of ladies stamped 10k MHJ white gold sixty three diamond rings. The central diamond is invisibly set and is surrounded by two claw set diamonds. Diamonds are bead set in an outer surrounding halo and along the upraised shoulders. Diamonds are bead set in the fitted wedder. The rings are of cast manufacture. Ring Size: O.

Measurements:

- 1 x Diamond – round brilliant cut, 2.4mm, estimated weight 0.05ct, Clarity P2-P3, Colour G-I.
- 6 x Diamonds – round brilliant cut, 2.1mm, estimated weight 0.035ct each, Clarity P2-P3, Colour G-I.
- 29 x Diamonds – round brilliant cut, 1.1mm to 1.2mm, estimated weight 0.005ct each, Clarity P2-P3, Colour G-I.
- 27 x Diamonds – single cut, 0.8mm to 0.9mm, estimated weight 0.004ct each, Clarity SI-P1, Colour G-I.

Due to the stones being set the weight, clarity and colour are estimated.
Total Diamond Weight: 0.513ct.
Total Weight: 4.10 grams.

Valuation based on retail replacement in a multi store retail outlet.

Retail Replacement Value

\$2,735.00

The total valuation of this item is two thousand seven hundred and thirty five dollars.

Exchange Rate: US\$0.71
Metal Prices: Aus \$: Gold - \$2,591.57

RGMacham

Valued by Rebecca Macham FGAA. NCJV Reg Valuer WA0063



Gemstones have not been removed from the settings for accurate assessment, all grades and weights are approximate. Valuation is based on the current value at the time of valuation and includes Australian Government Taxes where applicable. This valuation is not suitable for any purpose other than the purpose(s) stated above and should not be relied on by an entity besides the addressee unless specifically noted.