



# VICTORIA JEWELLER & WATCHMAKER

ABN 89 626 762 856 Tel: (08) 9361 2844

415 Albany Highway, Victoria Park, W.A. 6100

Web: [www.victoriajeweller.com.au](http://www.victoriajeweller.com.au) Email: [info@victoriajeweller.com.au](mailto:info@victoriajeweller.com.au)

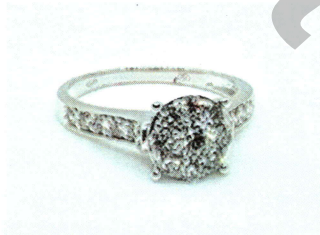


## CERTIFICATE OF VALUATION

Blue Moon Enterprises

Reference: 8899-236288

Date: 8 May 2025



### Description

### DIAMOND RING

Stamped 750, JP02. 18ct White gold.

The centre diamond is eight claw set and is surrounded by four claw set diamonds upon the four claw pierced patterned collet and pave set diamonds are displayed upon each upraised and slightly flared shoulder. The exact replacement may be difficult.

### Measurements.

1 x Diamond – Round Brilliant cut, 4.5mm total estimated weight 0.35cts  
Colour I, Clarity SI2

8 x Diamonds – Round Brilliant cut, 2.4-2.5mm total estimated weight 0.40ct

10 x Diamonds – Round Brilliant cut, 2-2.1mm total estimated weight 0.35ct  
Colour H-I, Clarity SI-P1



Total diamond weight: 1.10cts  
Band: Flat  
Ring Size: U

Manufacture: Mass production cast  
Shank: 2.1<3mm  
Total Weight: 5.28 grams

Valuation based on retail replacement at Perth, traditional bricks and mortar retail outlet.

This valuation has been prepared for the sole purpose of retail replacement at a traditional bricks and mortar retail store. It does not represent the second-hand resale value of the item. The second-hand resale value may vary significantly depending on market conditions, demand, and negotiations. It is the sole responsibility of the owner to determine and agree upon a second-hand resale price with a willing buyer. No guarantees are made or implied regarding the amount the item may sell for on the open market.

**FIVE THOUSAND TWO HUNDRED & FIFTY-FIVE DOLLARS**

**\$5,255.00**

Represents the value for such articles for the purposes stated.

Exchange Rate: A.64 Gold: \$5279 Plat: \$1566  
(AUD\$/Ounce)

TEENA SHEPPARD FGAA

Dip GEM, NCJV Registered Valuer Reg W0084

Gemmologist

Member NCJV WA Division

Member GAA WA Division

*T Sheppard*



Gemstones have not been removed from the settings for accurate assessment, all grades and weights are approximate. Valuation is based on the current value at the time of valuation and includes Australian Government Taxes where applicable. This valuation is not suitable for any purpose other than the purpose(s) stated above and should not be relied on by an entity besides the addressee unless specifically noted. The valuation is subject to the terms and conditions supplied on the take-in form at the time of requesting this valuation, see reverse side.