



VICTORIA JEWELLER & WATCHMAKER

ABN 89 626 762 856 Tel: (08) 9361 2844

415 Albany Highway, Victoria Park, W.A. 6100

Web: www.victoriajeweller.com.au Email: info@victoriajeweller.com.au



ncjv Registered
Valuer

CERTIFICATE OF VALUATION

Blue Moon Enterprises

Reference: 8882-232079

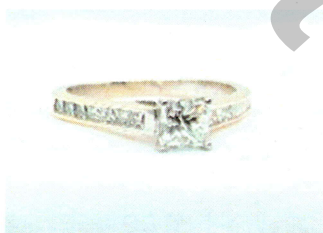
Date: 8 May 2025

Description

DIAMOND RING

Stamped 750, MHJ. 18ct Yellow gold.

The larger princess cut diamond is rhodium plate four claw chenier vee collet set centred and is flanked each side by channel set diamonds upon park lane upraised and square shoulders. The exact replacement may be difficult.



Measurements.

1 x Diamond – Princess Brilliant cut, 4.1x4.4x3.4mm total estimated weight 0.52cts
Colour H, Clarity SI1

The diamond has a large cleaved section under the girdle and the culet is chipped and is valued accordingly.

14 x Diamonds – Princess Brilliant cut, 1.5-1.6mm total estimated weight 0.28cts
Colour H-J, Clarity SI



Total diamond weight: 0.80cts

Band: Flat

Ring Size: L

Manufacture: Mass production cast

Shank: 1.8<2.3mm

Total Weight: 2.79 grams

Valuation based on retail replacement at Perth, traditional bricks and mortar retail outlet.

This valuation has been prepared for the sole purpose of retail replacement at a traditional bricks and mortar retail store. It does not represent the second-hand resale value of the item. The second-hand resale value may vary significantly depending on market conditions, demand, and negotiations. It is the sole responsibility of the owner to determine and agree upon a second-hand resale price with a willing buyer. No guarantees are made or implied regarding the amount the item may sell for on the open market.

FOUR THOUSAND ONE HUNDRED DOLLARS

\$4,100.00

Represents the value for such articles for the purposes stated.

Exchange Rate: A.64
(AUD\$/Ounce)

Gold: \$5279

Plat: \$1566

TEENA SHEPPARD FGAA

Dip GEM, NCJV Registered Valuer Reg W0084

Gemmologist

Member NCJV WA Division

Member GAA WA Division

T Sheppard



Gemstones have not been removed from the settings for accurate assessment, all grades and weights are approximate. Valuation is based on the current value at the time of valuation and includes Australian Government Taxes where applicable. This valuation is not suitable for any purpose other than the purpose(s) stated above and should not be relied on by an entity besides the addressee unless specifically noted. The valuation is subject to the terms and conditions supplied on the take-in form at the time of requesting this valuation, see reverse side.