

Report no 25360 Date 6/11/2024  
Assigned Use Consumer Insurance Retail Replacement (New)

The following appraisal has been prepared for consumer insurance purposes only, as of the effective date of this report, and this limits reliance on the report for the intended & assigned use and prohibits other uses.

The information has been prepared from evaluation methods as stated throughout this report.

The retail estimate is in Australian dollars and includes 10% GST, and is based on current retail market data of new or comparable items to replace with similar.

**Item description** 9ct White gold pair of Laboratory Grown Diamond Earring Studs - each four claw mount has one Round brilliant cut laboratory grown diamond finished with fitted post and butterfly backing.

**Stamped** 375  
**Metal Purity** 9ct White gold

**Gems** 1 claw set Round brilliant cut Laboratory Grown Diamond 6.51 x 3.88mm = 1.00ct Known Weight  
**Colour & Clarity** D VS1

**Inscription / Report date** IGI LG653441876 Report Date: September 21, 2024  
**Cut, Pol, Sym, Fluor** Id.Ex.Ex.None

**Gem** 1 claw set Round brilliant cut Laboratory Grown Diamond 6.50 x 3.96mm = 1.02ct Known Weight  
**Colour & Clarity** D VS1  
**Inscription / Report date** IGI LG656481574 Report Date: October 4, 2024  
**Cut, Pol, Sym, Fluor** Id.Ex.Ex.None

**Weight** 1.61gms

Estimated Retail Replacement Value \$ 4,500.00  
USD \$ 0.6637 Aud Gold \$ 4,134.67



**Dianne Walker AISCV, Dip. AIS-GJV, FGAA Dip. D.T., AdvDipETI**  
AIS Certified Valuation Appraiser  
Registered Valuer AISV 28

P.O. Box 118, Canterbury 3126  
E: inoreappraisal@gmail.com  
ABN: 41 148 867 123



## INTERNATIONAL GEMOLOGICAL INSTITUTE

### LABORATORY GROWN DIAMOND REPORT

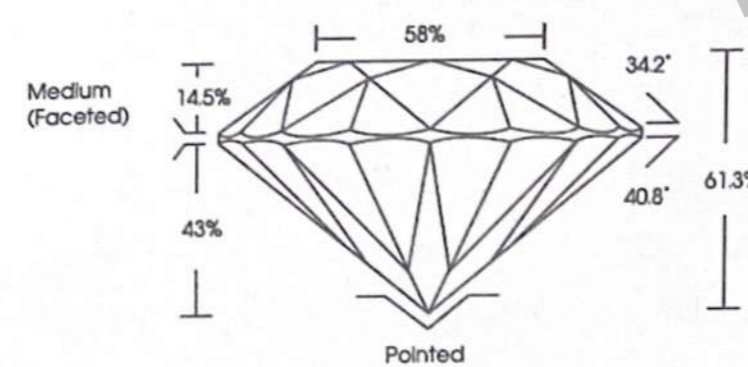
October 4, 2024  
IGI Report Number LG656481574  
Description LABORATORY GROWN DIAMOND  
Shape and Cutting Style ROUND BRILLIANT  
Measurements 6.44 - 6.50 X 3.96 MM

**GRADING RESULTS**  
Carat Weight 1.02 CARAT  
Color Grade D  
Clarity Grade VS 1  
Cut Grade IDEAL

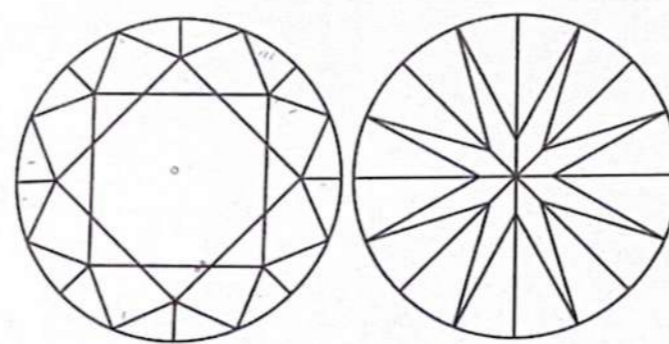
**ADDITIONAL GRADING INFORMATION**  
Polish EXCELLENT  
Symmetry EXCELLENT  
Fluorescence NONE  
Inscription(s) IGI LG656481574  
Comments: As Grown - No indication of post-growth treatment. This Laboratory Grown Diamond was created by High Pressure High Temperature (HPHT) growth process. Type II

LG656481574  
Report verification at Igloria

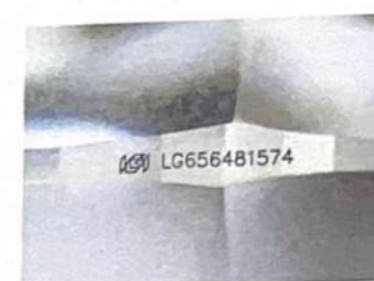
#### PROPORTIONS



#### CLARITY CHARACTERISTICS



**KEY TO SYMBOLS**  
Red symbols indicate internal characteristics.  
Green symbols indicate external characteristics.



Sample Image Used

#### COLOR

D E F G H I J Faint Very Light Light

#### CLARITY

F VS<sup>1-2</sup> VS<sup>1-2</sup> SI<sup>1-2</sup> I<sup>1-3</sup>  
Internally Flawless Very Very Slightly Included Very Slightly Included Slightly Included Included

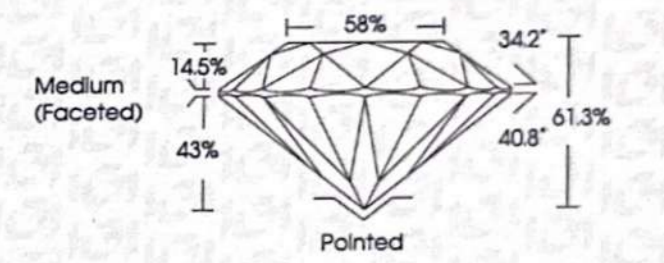


© IGI, 2021, International Gemological Institute. FLGD - 01.21

### LABORATORY GROWN DIAMOND REPORT

October 4, 2024  
IGI Report Number LG656481574  
Description LABORATORY GROWN DIAMOND  
Shape and Cutting Style ROUND BRILLIANT  
Measurements 6.44 - 6.50 X 3.96 MM

**GRADING RESULTS**  
Carat Weight 1.02 CARAT  
Color Grade D  
Clarity Grade VS 1  
Cut Grade IDEAL



#### ADDITIONAL GRADING INFORMATION

Polish EXCELLENT  
Symmetry EXCELLENT  
Fluorescence NONE  
Inscription(s) IGI LG656481574  
Comments: As Grown - No indication of post-growth treatment. This Laboratory Grown Diamond was created by High Pressure High Temperature (HPHT) growth process. Type II



October 4, 2024  
IGI Report No. LG656481574  
ROUND BRILLIANT  
6.44 - 6.50 X 3.96 MM  
Color Grade D  
Clarity Grade VS 1  
Cut Grade IDEAL  
Medium (Faceted)  
Comments: As Grown - No indication of post-growth treatment. This Laboratory Grown Diamond was created by High Pressure High Temperature (HPHT) growth process. Type II



## INTERNATIONAL GEMOLOGICAL INSTITUTE

### LABORATORY GROWN DIAMOND REPORT

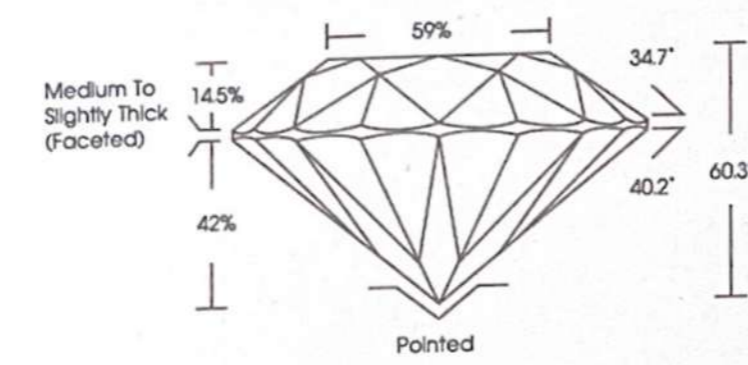
September 21, 2024  
IGI Report Number LG653441876  
Description LABORATORY GROWN DIAMOND  
Shape and Cutting Style ROUND BRILLIANT  
Measurements 6.42 - 6.51 X 3.88 MM

**GRADING RESULTS**  
Carat Weight 1.00 CARAT  
Color Grade D  
Clarity Grade VS 1  
Cut Grade IDEAL

**ADDITIONAL GRADING INFORMATION**  
Polish EXCELLENT  
Symmetry EXCELLENT  
Fluorescence NONE  
Inscription(s) IGI LG653441876  
Comments: As Grown - No indication of post-growth treatment. This Laboratory Grown Diamond was created by High Pressure High Temperature (HPHT) growth process. Type II

LG653441876  
Report verification at Igloria

#### PROPORTIONS



Sample Image Used

#### COLOR

D E F G H I J Faint Very Light Light

#### CLARITY

F VS<sup>1-2</sup> VS<sup>1-2</sup> SI<sup>1-2</sup> I<sup>1-3</sup>  
Internally Flawless Very Very Slightly Included Very Slightly Included Slightly Included Included

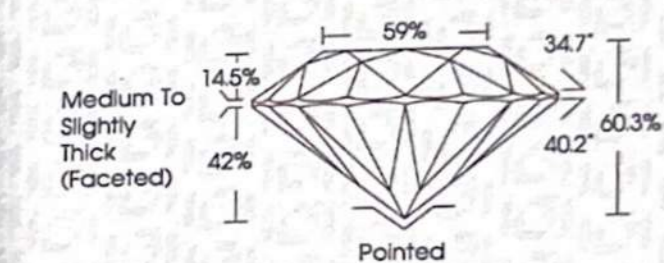


© IGI, 2021, International Gemological Institute. FLGD - 08.24

### LABORATORY GROWN DIAMOND REPORT

September 21, 2024  
IGI Report Number LG653441876  
Description LABORATORY GROWN DIAMOND  
Shape and Cutting Style ROUND BRILLIANT  
Measurements 6.42 - 6.51 X 3.88 MM

**GRADING RESULTS**  
Carat Weight 1.00 CARAT  
Color Grade D  
Clarity Grade VS 1  
Cut Grade IDEAL



#### ADDITIONAL GRADING INFORMATION

Polish EXCELLENT  
Symmetry EXCELLENT  
Fluorescence NONE  
Inscription(s) IGI LG653441876  
Comments: As Grown - No indication of post-growth treatment. This Laboratory Grown Diamond was created by High Pressure High Temperature (HPHT) growth process. Type II



September 21, 2024  
IGI Report No. LG653441876  
ROUND BRILLIANT  
6.42 - 6.51 X 3.88 MM  
Color Grade D  
Clarity Grade VS 1  
Cut Grade IDEAL  
Medium To Slightly Thick (Faceted)  
Comments: As Grown - No indication of post-growth treatment. This Laboratory Grown Diamond was created by High Pressure High Temperature (HPHT) growth process. Type II