

VICTORIA JEWELLER & WATCHMAKER

ABN 89 626 762 856 Tel: (08) 9361 2844
415 Albany Highway, Victoria Park, W.A. 6100

Web: www.victoriajeweller.com.au Email: info@victoriajeweller.com.au



CERTIFICATE OF VALUATION

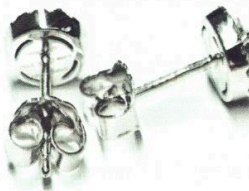
Cash Converters – Vic Park

Reference: 2186-235761

Date: 4 August 2025



Description LABORATORY GROWN DIAMOND EARRINGS
Stamped Au585, 0.75ct, SWAROVSKI 001315690. 14ct White gold.
The larger centre laboratory grown diamond is four claw set surrounded by four scalloped claw set smaller laboratory grown diamonds upon the round stage and has plain posts set adjacent with matching butterflies attached. The exact replacement may be difficult. The earrings are priced for replacement at Swarovski online with the current equivalent item, Article ref # 5698155.



Measurements
2 x Laboratory Grown Diamonds –
Round Brilliant cut, 4.1mm total estimated weight 0.50cts, Colour G-H, Clarity VVS
Laser inscribed: SWAROVSKI CREATED DIAMONDS
26 x Laboratory Grown Diamonds –
Round Brilliant cut, 1.3mm total estimated weight 0.25cts, Colour G-H, Clarity VVS

Total diamond weight: 0.75cts Manufacture: Cadcam
Band: N/A Shank: N/A
Ring Size: N/A Total Weight: 2.34 grams

Valuation based on retail replacement at Perth, traditional high-end boutique retail outlet.
This valuation has been prepared for the sole purpose of retail replacement at a traditional bricks and mortar retail store. It does not represent the second-hand resale value of the item. The second-hand resale value may vary significantly depending on market conditions, demand, and negotiations. It is the sole responsibility of the owner to determine and agree upon a second-hand resale price with a willing buyer. No guarantees are made or implied regarding the amount the item may sell for on the open market.

Two Thousand Three Hundred Dollars \$2,300.00

Represents the value for such articles for the purposes stated.

Exchange Rate: A.64 Gold: \$5202 Plat: \$2088
(AUD\$/Ounce)

Valued by: TEENA SHEPPARD FGAA
Dip GEM, NCJV Registered Valuer Reg W0084. Member NCJV WA Division
Gemmologist. Member GAA WA Division

T. Sheppard



Gemstones have not been removed from the settings for accurate assessment, all grades and weights are approximate. Valuation is based on the current value at the time of valuation and includes Australian Government Taxes where applicable. This valuation is not suitable for any purpose other than the purpose(s) stated above and should not be relied on by an entity besides the addressee unless specifically noted. The valuation is subject to the terms and conditions supplied on the take-in form at the time of requesting this valuation, see reverse side.